

EXTENSIONS | RENOVATIONS | SELF-BUILDS | SMALL PROJECTS | INTERIORS

GRAND DESIGNS



£4.30 May 2017



THE UK'S
BEST-LOVED
SELF-BUILD
BRAND

Extend, renovate transform!

212 pages of advice
and success stories

TV EXCLUSIVE

BUILD ON A BUDGET

The house that
was started
with just £500

LUXE KITCHENS & BATHROOMS

Secrets to designer
style for less

KEVIN McCLOUD'S BRILLIANT TIPS

Why you should build
a healthy home

WIN
£5,000

WORTH OF

Underfloor heating
and rainwater
systems

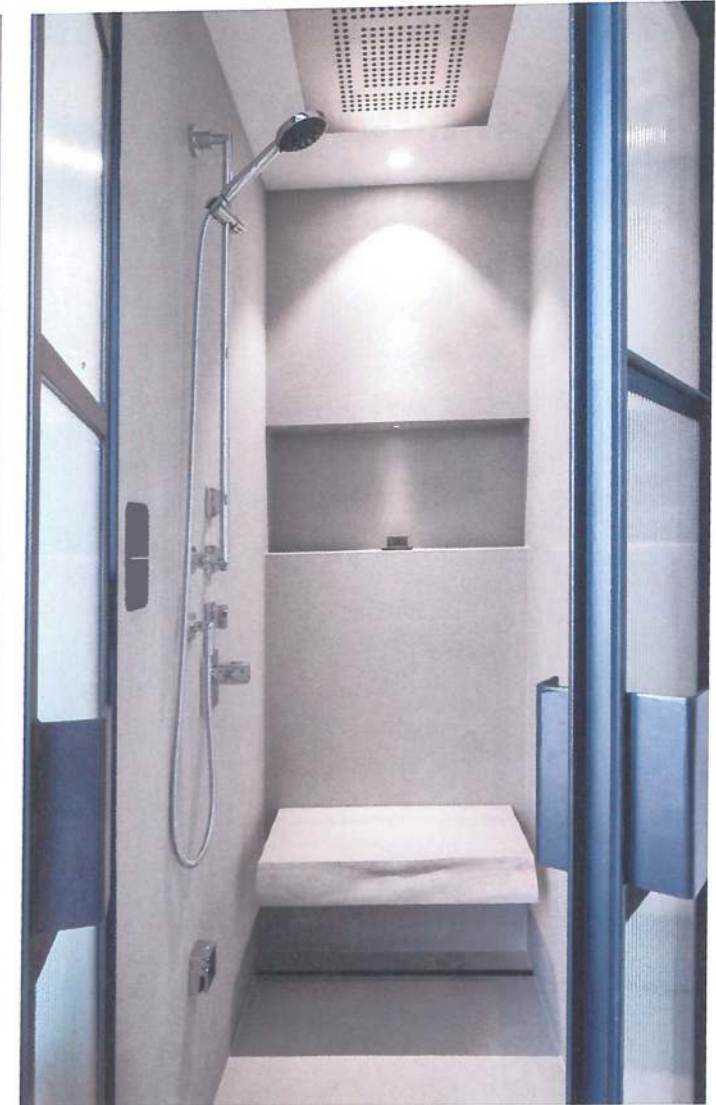
STUNNING ARCHITECTURE to inspire your projects

BUYER'S GUIDE TO GLAZING

Everything you
need to know

GETTING STARTED GUIDE | Plot finding | Hiring an architect | Design | Planning permission | Finance

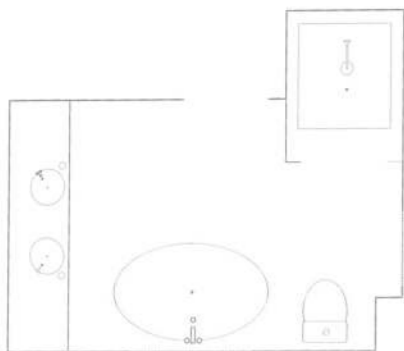
Honed ocean black travertine wall panels create a striking contrast with the vertical alcoves



CASE STUDY

PROJECT DETAILS

Location NW London
Style of property A stucco-fronted Victorian duplex
What they did Renovated the 10sqm en-suite bathroom
Cost Porcelain floor tiles by Bibliotheque, £128 per sqm, Roselind Wilson Design (020 3371 1779; roselindwilson.design.com); Zen deck-mounted basin taps in vintage brass, £820 each, Victoria & Albert at West One Bathrooms (0333 011 3333; westonebathrooms.com)



Contemporary, sleek & stylish

Key to this bathroom renovation was an industrial look with fantastic natural stone and a sense of luxury

The first thing Natasha and Sam Chandler wanted to do when they bought their first home together as a married couple was to put their own stamp on it – and that included the bathroom. Embarking on an extensive renovation of their stucco-fronted Victorian duplex, they approached Roselind Wilson, designer and founder of Roselind Wilson Design, to turn their lacklustre master bathroom into something special. 'Natasha and Sam were a young professional, entrepreneurial couple, and both had a love of culture, having lived and

worked internationally and travelled extensively,' she says. 'They were excited to carry out the refurbishment to their own unique taste, and, since they'd lived in various countries, their style was quite refined. The brief was to create a sophisticated, industrial-look bathroom incorporating a steam shower, bath, double vanity and beautiful natural stone.' The couple explained to Wilson the overall look and feel they wanted for the bathroom, the kind of stone they liked and showed her some images for inspiration. 'Natasha and

Sam had a long-standing relationship with a specialist marble supplier in Italy, so all the natural stones were carefully selected and a specialist fitting team flown in from Italy to ensure a perfect result,' she recalls. 'The rest of the design of the bathroom was organic, starting with the bath, which was placed by the window to take advantage of a beautiful view. Then we repurposed space from the hallway to fit a steam/sauna shower, with a generator housed inside the stud walls. This left the main wall opposite the master bathroom's entrance for a showcase double vanity. The ceiling heights in the room are almost 3m so we decided on a large mirror and designed this feature to connect the elements.' As some of the stone chosen had striking striations, Wilson felt it would be best to use it to create a focal point to define the room. 'The

design started with strong lines, seen in the chunky horizontal vanity top, offset by strong vertical grey limestone storage niches on either side,' she explains. 'To balance this, the support bars of the mirror curve gently back towards the wall with further curves provided by the oval surface-mounted bowls. The effect is quietly dramatic. Below, the vanity cupboard doors have a textured surface by XyloCleaf that mimics metal mesh when close up.' By combining different materials, textures and finishes, the bathroom exudes a sense of individuality while remaining luxurious. 'The stripy stone is honed ocean black travertine, chosen for its warmth, character and consistent veining, without being overbearing,' says Wilson. 'Despite its strength in pattern, it is somehow understated and timeless. Urban grey antiqued limestone was then chosen to provide a solid contrast to

IDEA TO STEAL

Chic towel rail

Instead of run-of-the-mill chrome or white, try a different finish for a towel rail to add a luxurious feel. A champagne 1020x500mm heated towel rail in anthracite from Victoria Plum costs £159. (0344 804 4848; victoriaplum.com)

above left The Zen taps serving the basins have magnetic handles that can be removed for easy cleaning

above The steam/sauna shower hides a generator behind one of the walls

the movement of the travertine. The metals bring the industrial twist, specified in the client's brief, without being too cold. Mixing metals, such as the vintage brass taps, bronze metal mirror, radiator and door frames, adds a more authentic feel. The result is a sophisticated yet personal design with all the features of a chic hotel bathroom, but in the comfort of their own home.' GD