

INTERNATIONAL PROPERTY & Travel

THE FINEST HOMES, TRAVEL AND LIFESTYLE

Vol 24 No 2

Homes *on the*
River Thames

India

- Supercars
- Jewellery & Watches
- Interiors
- Art Exhibitions

BOX *for sale*
£2.5m!

*James Bond's
slipfall yacht*

British
Caribbean

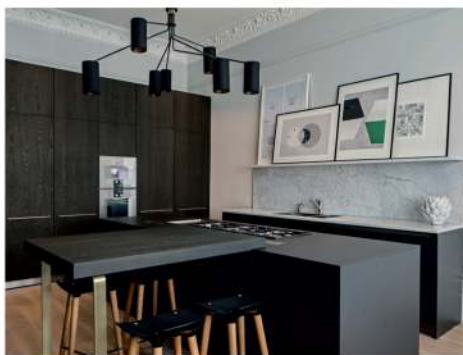
Cover image:
Nashua Residences
see page 17

PIERRE CARDIN
Pierre Cardin - **\$335 million**
Bubble Palace &
George Michael's former villa

DREAM. *CULSINE*



Award-winning interior designers offer advice on perfecting that all-important hub of the home - the kitchen



Space identity

Roselind Wilson Design is a London-based interior design studio specialising in top end residential projects in the UK and abroad. “We believe the space and the person to be one and the same,” explains the company’s founder and owner Roselind Wilson. “Our processes, values and culture are design-centric and focused to deliver strong space identity.

“Give thought to the kitchen’s position within the house. Will it be part of an open plan arrangement that forms an extension of the dining room or will it be a completely separate room? Will it be an intimate kitchen where the family gathers around the breakfast bar to share meals? Or will it be a

more formal entertaining kitchen where a private chef will prepare dinners for guests? It might perhaps be a combination of both however these are significant questions that should be considered in the layout, seating, appliances and lighting to ensure the desired functionality and outcome of the design.”

Roselind advises that a kitchen with an island is most advantageous. “This not only allows for a desired preparation or cooking surface but also forms the perfect room divider if it is open plan. It’s also good to ensure that all tall units are not placed directly opposite the kitchen entrance,” she says. “This can make the kitchen feel smaller or cluttered. If your kitchen has a bay window, a perfect design feature to incorporate is a banquette seating area that can function as a dining or informal eating area.”

Bright colour schemes tend to become outdated quickly and so Roselind’s advice is to steer clear of these. “You can be bold with colour, however the best options are moodier, darker colours like greys, blues and greens.

Even a monochromatic scheme can remain sophisticated and timeless when paired with other materials and finishes. Opting for a single colour in the kitchen can feel clinical and uninspiring. A good suggestion is to marry woods and natural stones or composites for practicality and durability as this adds a timeless feel.”

Modern trends have allowed the kitchen to take on the same hierarchy as the living and dining rooms meaning that features akin to these areas are now found in the kitchen. “Adding a feature fireplace gives a homely and inviting feel to the kitchen,” says Roselind. “Another consideration is to have fun with the floor. Stunning resins are fantastic, durable surfaces for the kitchen and can act as a blank canvas on which you can add patterns and a burst of colour if required.

“Kitchens are now showcasing timbers in warmer tones and generally richer colours. Lighting is being introduced in varying levels with LED ceiling spotlights supported by ambient wall lights and channel lights in joinery and behind glazed units to add a sense of warmth. Marbles have always been a priority in any high-end kitchen design however these are being replaced by composites that brilliantly mimic marble for their durability and practicality – qualities that are becoming extremely important to a discerning clientele.” ■

Roselind Wilson Design

w: www.roselindwilsondesign.com