



ROSE SQUARE, THE BROMPTONS

布朗普顿的玫瑰人生

设计 / Roselind Wilson 摄影 / Richard Waite 翻译 / 范嘉苑 编辑 / 肖俊 美编 / 彭旭华

项目地址 英国 伦敦
项目面积 205m²
设计单位 Roselind Wilson Design



Roselind Wilson
英国Roselind Wilson Design创始人

本案是一套两层楼的复式公寓，其中包括三间卧室、三间浴室、一间正式客厅以及可通往厨房的会客厅/餐厅。本次设计旨在将原来的公寓改造为第二居所，打造出一个既能在技术上与时俱进，又能明确反映业主个性的居家空间，让空间既富有家的感觉，又远不只是一间住宅。为了对整体空间进行全面改造，其中包括保障空间布局及每个涂饰细节的顺利进行，设计师将室内的原有布局进行全面推翻和掏空。

会客厅/餐厅除精心设计了一张6-8人座的餐桌外，还设置有充足的座位及定制的扶手椅让业主坐下来惬意地欣赏电视节目。室内的所有装饰材料均由Roselind Wilson设计团队设计，其中采用了出色的Madrona面板以及有着青铜细节设计的灰色蜡木木材。一盏层层相叠的烟色玻璃枝形吊灯装饰了餐桌，柔美的灰色蜡木地板和温和的青色墙壁勾勒出整个房间的轮廓。高大的镶框式蜡木门与传统的抛光铬门给整个空间的细节定下了基调。

客厅的感觉更接近于庄严与奢华。这里是正式的娱乐区，同时也是业主逃离忙碌生活的休憩之地。有着绝佳音响效果的音响设备是客厅设计的一大亮点，人们能在此获得意想不到的聆听体验。两个顶尖的



B&W落地式扬声器放置在壁炉两侧以平衡音响效果，除此之外，天花板上也安装了扬声器。所有的家具和室内装饰品都是由设计师定制设计，它们以蓝色和金色为主色调，强调了奢华之美。此外，用丝绸和马海毛制成的手工编织图案地毯、蓝灰相间的墙面、精美的框架挂画、别具一格的配饰、清新的花卉摆设等，共同为客厅的奢华之美增色。

楼上的卧室被设计成了个性化的套间，并创造出了一定的延展空间。主卧的墙壁采用了富有层次感的柔美蓝色丝壁，搭配一张银色的人造丝绸地毯，让整个房间尽显奢华。富有造型感的紫红色丝绸床头板与华美的床褥用品形成了鲜明的反差，这些床褥用品采用了600线程的清爽亚麻织布，带有图案的绸缎被单和木炭色的方格薄被层叠在床上。卧室里的所有家具都是专门定制的：这里有覆盖了一层织布的雀眼枫木抽屉，就连挂在墙壁上的香槟色油画画框都是手工着色的，画框内还镶嵌了一层丝绸内衬，各种细节共同创造出了这间华丽的卧室。

第三间卧室即书房，这里的设计既要满足业主孙子孙女的居住需求，又要打造成一间办公房。室内设计以灰色作为主色调，定制的漂白蜡木衣柜由Roselind Wilson设计团队设计，与之搭配的还有镶上了青铜色手柄的织纹门。暖灰色的地毯采用了编织皮革的图案效果，外观独特，而且很耐用。单人沙发床摆放在房间的另一端，它可以轻易地转变成床或是有着大块枕垫和靠枕的扶手椅。定制的灰色蜡木书桌倚靠在青铜色壁灯侧边，为业主营造了一个舒适的工作环境。

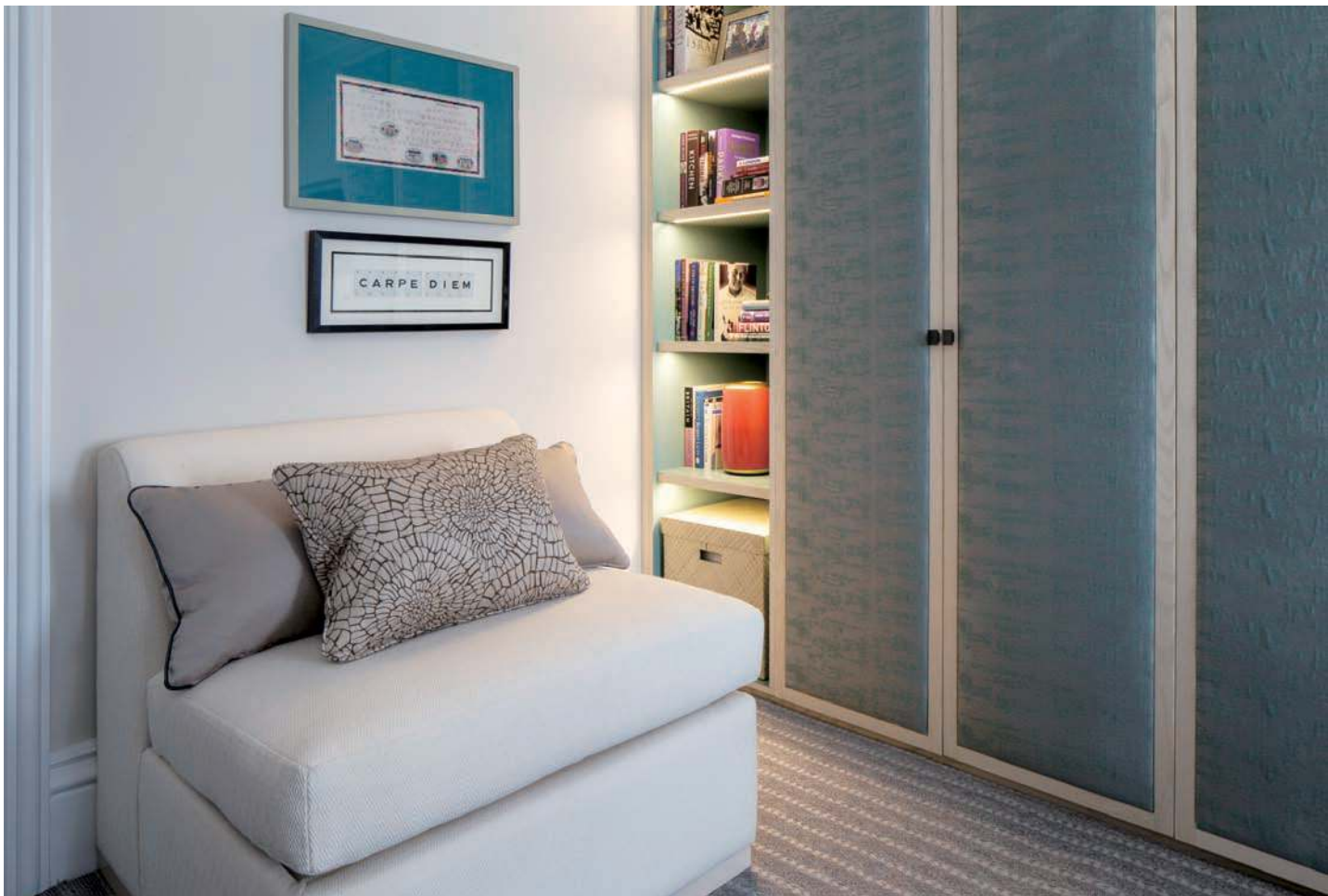


This 2209 square-foot apartment arranged over two floors and is comprised of 3 bedrooms and 3 bathrooms with a formal Drawing Room and Sitting / Dining Room leading into the Kitchen. The brief was to transform the existing apartment into a secondary residence for the client bringing it up to date in terms of technology but clearly reflecting the personality of the client to ensure a space that feels unequivocally like home away from home. The entire property was gutted to allow for a full refurbishment of the entire space to include the spacial layout and every finish.

The Sitting / Dining Room was carefully designed to allow for a 6-8 seater dining table as well as sufficient seating to allow the client to sit and watch television comfortably from bespoke armchairs. All furnishings within the space were designed by Roselind Wilson Design and manufactured in stunning Madrona burr and grey ash timbers with bronze metal detailing. A tiered, smoked glass chandelier adorns the dining table with the room being brought together by soft grey ash floors and muted teal walls. Tall panelled light ash doors with traditional door furniture in polished chrome sets the tone for the detailing of the space.



The Drawing Room was approached with a sense of grandeur and luxury. This was to be the formal entertaining area as well as the space in which the client could retreat to escape in the crystal clear sound of the music emitted from the speakers. The acoustics and sound specification in this room was elevated to allow for an unimaginable listening experience. Top end B&W floor mounted speakers are positioned on either side of the fireplace to balance the sound in addition to the ceiling speakers. All furniture and soft furnishings are bespoke and designed by Roselind Wilson Design in a palette of blues and golds to accentuate the sense of luxury. The silk and mohair patterned hand knotted rug forms the foundation of the room, surrounded by blue/grey walls in turn adorned with elaborately framed commissioned oils all brought together with the accents in the accessories and fresh floral arrangements.





The bedrooms upstairs have all been very personalized with the ensembles creating a definite extension of the bedrooms. The Master bedroom has been layered with soft blue silk walls and a silver faux silk carpet for ultimate luxury. The shaped headboard in aubergine silk creates a contrast to the 600 thread count crisp linen for the beds all layered in the satin patterned bedspread and charcoal checkered throw. All furniture has been bespoke designed in bird's eye maple with fabric clad drawers, walls are adorned with artwork with silk mounts and champagne hand painted frames to create a luxurious sanctuary.

The third bedroom or Study needed to accommodate the client's grandchildren as well as be a functioning work. With a palette of teal and taupe, Roselind Wilson Design designed bespoke wardrobes in bleached ash and with textured fabric door panels and bronze handles. The carpet is a woven leather effect finish in a warm grey for a unique and durable surface. Single bed sofa beds were designed for opposite ends of the room and can be easily transformed into beds or armchairs with large bolsters and cushions. A bespoke desk in stained grey/green oak flanked by bronze wall lights forms a comfortable space for the client to work. **M**

