

现代装饰·家居

现代装饰·家居

MODERN DECORATION HOME

+单品

BRING THE DREAM LIGHT INTO REALITY

梦想照进现实

334

2014.10

RMB 35 USD 10

ISSN 1003-9007 CN 44-1031 / TS



9 771003 900024

家居设计文化的倡导媒体

+专题

INSPIRED CITY AND DESIGN

灵感激荡的城市与设计

——巴黎家居装饰博览会专题报道





EATON MEWS HOUSE

素之雅韵

设计 / Roselind Wilson 摄影 / Richard Wain 编译 / 范嘉苑 美编 / 彭旭华

项目地址 英国 伦敦
项目面积 130m²
设计单位 Roselind Wilson Design



Roselind Wilson
英国 Roselind Wilson Design
创始人兼主设计师

这座由马厩改造成的住房位于伦敦的首相花园广场背后，其开发商于2012年与 Roselind Wilson Design (RWD) 取得联系，希望RWD能重新改造房子的室内设计。改造工程始于2012年，于2014年7月正式竣工。原本的住宅涵盖了三层楼，按照开发商的要求，RWD重新整改了房子的总体内部格局，增加了一层地下室，所以这座住宅现在共有四层楼。

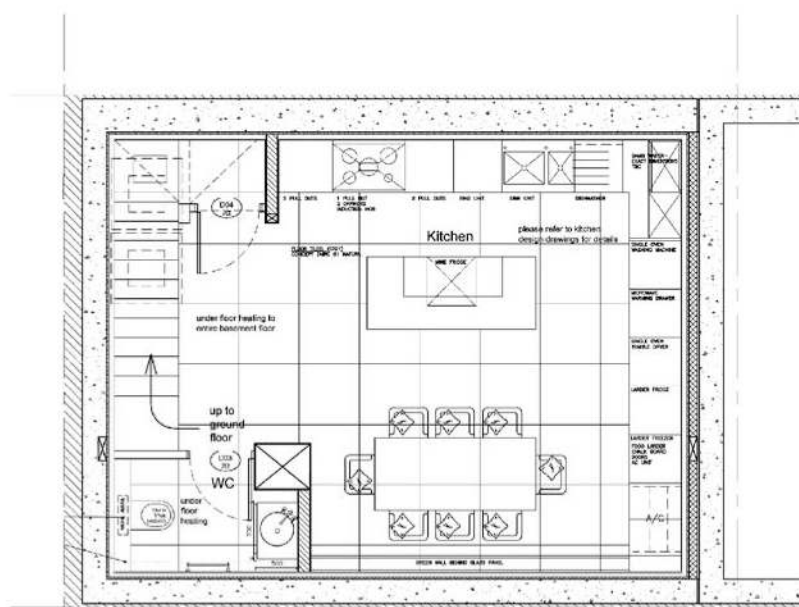
RWD几乎包揽了所有空间和细节的设计与润饰——厨房、浴室、细木工、装饰灯具、门窗、门配件、面板、楼梯间、入口门厅、墙面装饰等，全都是由设计团队一手打造的。RWD还与Audio Visual、AC等顾问公司联系，并请承包商在现场测量各种房屋规格以及更新图样，而且所有的设计图纸都由RWD校对过，力求让房子的内部设计做到尽善尽美。RWD专门定制设计了房子里的所有窗户及床头板，其他的软装饰品都是由RWD外购的，这些外购的软装饰品都经过了RWD的严格把关，以保证它们与房子内部的装修风格保持一致，力图将其打造成一座位于伦敦的高级奢华住宅。

地下室涵盖了厨房与餐厅，餐厅背后有一面背光式的人造植物墙，攀附在墙面上的“绿色植物”瞬间给这个没有窗户的地下空间增添了一份清新与自然的活力。此外，地下室里还有宾客衣帽间以及一个隐藏式的餐用升降机，以便将食物从地下室运送至二楼客厅。

首层主要囊括了客房及其配套浴室，房

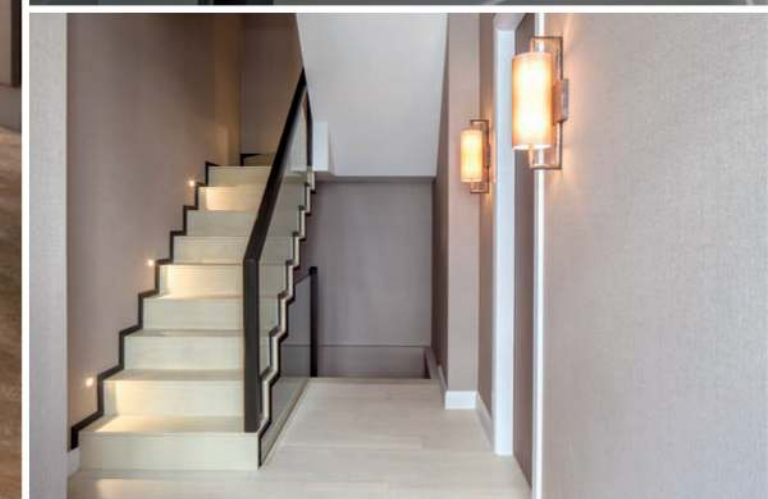


屋入口处有一道宽敞的门廊，这里配置了一个储物柜，便于放置衣服和鞋子。二楼则是一个开敞式的客厅空间，这里的最大亮点就是那面定制墙柜，墙柜有充裕的空间存放和安置书籍、花瓶、电视机、DVD等物品，在LED的灯光映衬下，这面墙柜更是给整个客厅增色不少。客厅的另一边摆放了一张雅致的书桌，书桌上有一幅嵌有霓虹灯管的艺术画，旁边则放置了几张富有现代气息的凳子。主卧及其配套的奢华大理石面浴室位于三楼，经过RWD对整体空间的重新布局后，三楼的空间看起来更加开阔，也因此营造出更为惬意和奢华的空间感。整座房子的内部空间并没有过多的繁杂设计，色调以清新素雅为主，但每个细节背后仍旧透露出奢华之感，它完美地诠释了何为“低调的华丽”。



地下一层平面图



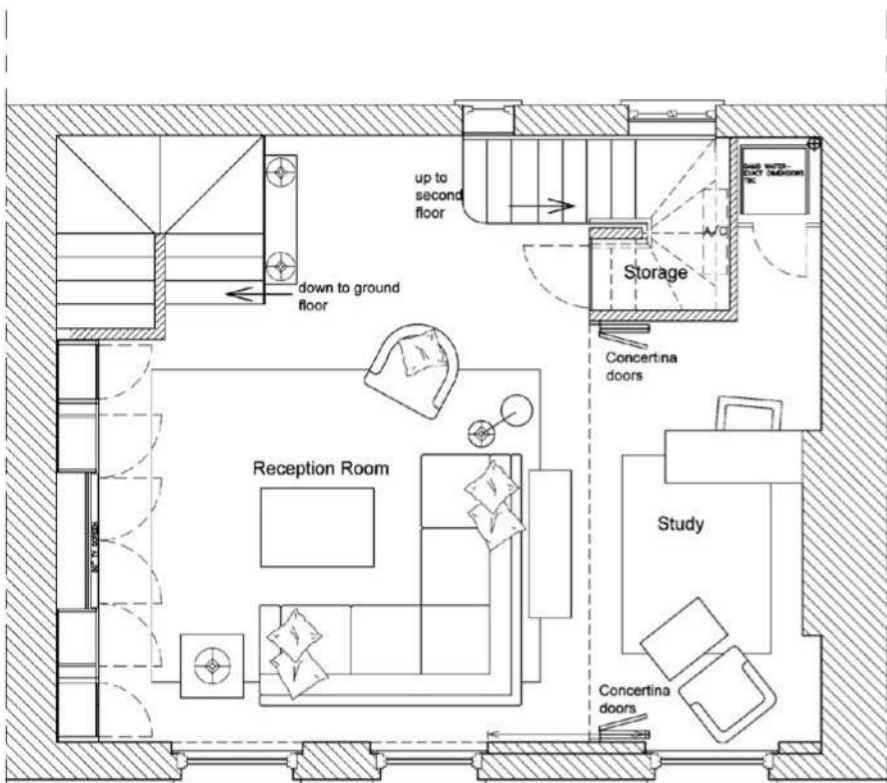


The developer of this mews house behind London's premier garden square contacted Roselind Wilson Design in 2012 to reconfigure and design the house. Works began in 2012 and were completed in July 2014. The property was formerly arranged across 3 floors which included ground, first and second floors, RWD was appointed to carry out the full interior architectural specification which included reviewing the layouts and determining a new layout across 4 floors, that being the basement, ground, first and second floors.

RWD designed and specified finishes for the kitchen, bathrooms, all the joinery, architectural and decorative lighting, all architectural finishes include doors, architraves, skirtings, faceplates and sockets, the staircases, entrance doors, garage doors, door furniture and ironmongery, wall finishes, etc. RWD also liaised with the various consultants, namely Audio Visual and AC to determine the specifications

and update the drawings for use by the contractor on site. The entire architectural drawing package was collated by RWD. Although RWD specified the window treatments and headboards, the remainder of the soft furnishings were outsourced but RWD's role was to oversee the interior schemes to ensure they were in line with the look and feel required for such a property in this exclusive and expensive part of London.

The basement kitchen diner features a backlit fake living wall which gives some "green space" in a window less room and makes for an unique and interesting feature. The basement also features a guest cloakroom and hidden "dumb" waiter to aid speedy delivery of meals and drinks to the first floor living area, avoiding two flights of stairs.



二层平面图

The guest bedroom is located on the ground floor which has its own en-suite bathroom while the generously spacious entrance hall has generous fitted cupboards to store coats and shoes. On the first floor is an open plan sitting room which comprises of a wall of bespoke shelving all lit by LEDs to make an interesting wall feature as well as practical space for books, vases, television and DVD, etc. A writing desk—with neon artwork positioned above—and contemporary stools are situated at the opposite end of the living area. The master bedroom and master (marble) bathroom are situated on the second floor which thanks to RWD's reconfiguration of the space are more generous in their size thus giving a better feeling of space and luxury. This house discards some complicated decorations, however, it is very beautiful and elegant. The meaning of low-key luxury has been told by this house. **M**

