

# INTERIOR DESIGN TODAY

THE TRADE ONLY MAGAZINE FOR INTERIOR DESIGN PROFESSIONALS JAN-FEB 2013 £5.95



IDTMAGAZINE.CO.UK

CABALLERO INTERIOR DESIGN

## News brief...

**Call for entries**

The Furniture Makers Company are calling for entries for The Design Guild Mark 2013. The Design Guild Mark rewards excellence in the design of furniture in volume production. The deadline for applications is 28th February 2013.

**Cappellini furnishing**

OHLA HOTEL is a new five-star hotel, which opened in Barcelona in 2012. The refurbishment of the building was overseen by the Alonso, Balaguer y Arquitectos Asociados firm of architects, with the assistance of the artist and sculptor Frederic Amat. The project includes some of the most famous icons from the Cappellini collection.

**Royal suite fit for a Queen**

The Gallery, the studio within HBA London, has transformed the Royal Suite at the InterContinental London Park Lane to have a timeless and elegant style inspired by Queen Elizabeth II. The Gallery has created a suite modelled in part after Her Majesty's acclaimed fashion sense. The new design also honours The Queen as a tender family person and an archetypal figurehead respected around the world.

**Jake Dyson in Hong Kong**

Jake Dyson took part in UKTI's The Great Week of Creativity, Hong Kong in November 2012. Jake Dyson spoke at The Global Design Summit. The Summit is one of the week's most enlightening and sought after conferences, including key speaker Sir John Sorrell.

# Pantone Colour of the Year 2013: Emerald

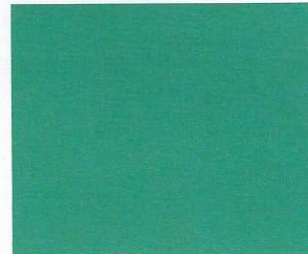
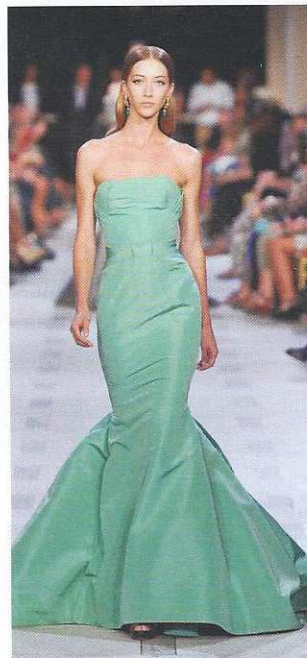
**Pantone LLC, the global authority on colour and provider of professional colour standards for the design industries, has announced PANTONE® 17-5641 Emerald, a lively, radiant, lush green as the colour of the year.**

The 2012 colour of the year, PANTONE 17-1463 Tangerine Tango, a spirited reddish orange, provided the energy boost needed to recharge and move forward. Emerald, a vivid verdant green, enhances a sense of well-being

further by inspiring insight, as well as promoting balance and harmony.

Most often associated with brilliant, precious gemstones, the perception of Emerald is sophisticated and luxurious. Since antiquity, this luminous, magnificent hue has been the colour of beauty and new life in many cultures and religions. Also the colour of growth, renewal and prosperity, no other colour conveys regeneration more than green. For centuries, many countries have chosen green to represent healing and unity.

"The most abundant hue in nature, the human eye sees more green than any other colour in the spectrum," said Leatrice Eiseman, executive director of the Pantone Colour Institute®. "As it has throughout history, multifaceted Emerald continues to sparkle and fascinate. Symbolically, Emerald brings a sense of clarity, renewal and rejuvenation, which is so important in today's complex world. This powerful and universally-appealing tone translates easily to both fashion and home interiors."



**PANTONE®  
3278 C**



## Ros Wilson scoops best show home design

The very best developments, architecture and interior design from across the entire United Kingdom were celebrated at the London Marriott Hotel Grosvenor Square in October 2012. The leading property professionals behind these outstanding projects were invited to attend the UK Property Awards in association with Gaggenau, Yamaha and the Royal Institute of Chartered Surveyors (RICS). Roselind Wilson Design Limited was awarded "Best Interior Design Show Home, London" as well as "Best Interior Design Show Home, United Kingdom" for their work on the Lateral Penthouse at Cornwall House.

