

INTERIOR DESIGN YEARBOOK 2020

WRITERS INCLUDE:

LAURA HAMMETT

KELLY HOPPEN

NATALIA MIYAR

EDITED BY **JADE TILLEY**

£8.95 CONSUMER EDITION



Published in association with the
British Institute of Interior Design





Lighting

By Roselind Wilson

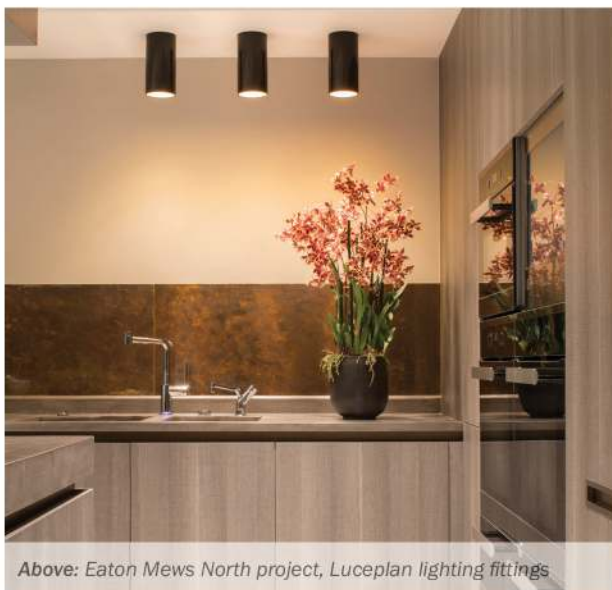
Creative Director and Founder, Roselind Wilson Design

With 18 years' experience in the design industry, Ros started her career in Cape Town, where she worked in the prestigious residential and hospitality sectors, transforming homes and redefining boutique hotels for discerning clients. After moving to London in 2005, she honed her design flair at some of London's leading design firms before opening Roselind Wilson Design in 2010. Roselind Wilson Design is an award-winning luxury interior design and interior architecture studio based in London that specialises in high-end residential projects both in the UK and across the world. Here Ros throws some light on the subject for within the home.

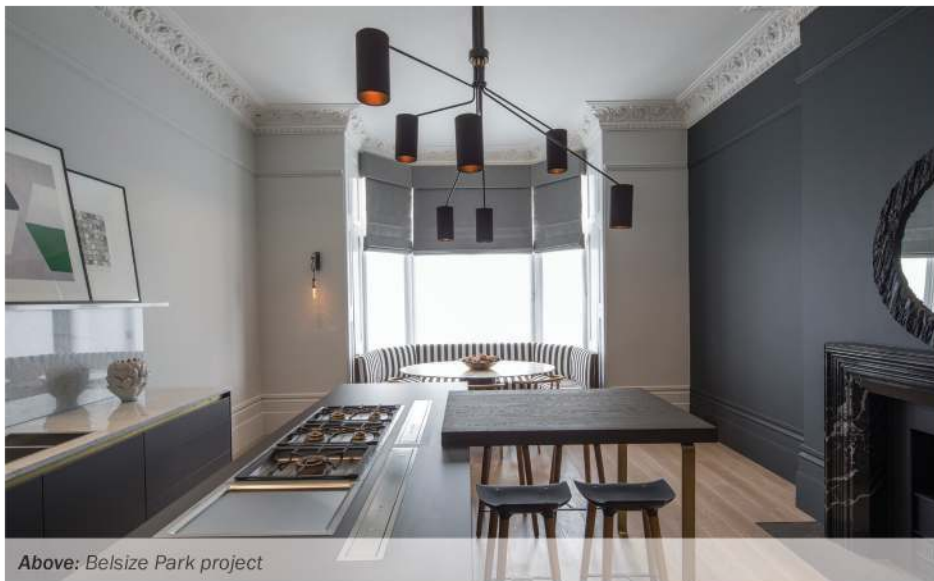
There's no doubt lighting can make or break an interior scheme, but sadly it's often only considered as an afterthought once the more obvious elements of a room design have been put together. If carefully planned, lighting not only provides functional illumination, it also plays a vital role in setting the tone and mood of a space.

Think about lighting in terms of layers. We believe the right use of the three main types of lighting – ambient, task and accent – can turn a beautiful interior design scheme into an absolutely showstopping one!

Ambient lighting should provide a good distribution of light across a whole room, taking into account the amount of natural



Above: Eaton Mews North project, Luceplan lighting fittings



Above: Belsize Park project

light available. It can be achieved with pendant lights, chandeliers or downlights, any light fitting that can create good illumination without glare. Task lighting has a practical focus, providing illumination for specific functions or to brighten poorly lit areas. Examples include under-cabinet lighting in a kitchen, wall lights and table lamps. Accent lighting is used to draw attention to a specific element within a design scheme such as a piece of art or an architectural feature. This can be achieved via picture lights, LED strips or uplighters.

THE KITCHEN

It's important to consider functionality and aesthetics as well as layout when planning lighting for the kitchen. In an open plan kitchen and living space, for example, you can use connected lighting to subtly divide the space by opting for crisp, white light in the kitchen zone and a warmer light in the living/dining area. Task lighting

is crucial above work surfaces, downlights add an extra layer of drama, and LED strips can easily be integrated at floor level to 'float' specific elements of a kitchen such as an island. In our Eaton Mews North project, lighting played a key role in bringing the dramatic faux living wall to life.

“With the resurgence of architectural lighting as decorative objects, a striking ceiling pendant is a great way to provide ambient lighting”

With no natural light in this basement kitchen, the living wall is lit from above with LED strip lighting. The colour of the LED lighting was specified at 3000

Kelvin, which mimics daylight, to give the impression of natural light flooding down from above. Elsewhere in the kitchen, two box pendant lights supply task lighting to the island. Task lighting above the worktops comes in the form of three black cylindrical Luceplan light fittings arranged in a row to create a strong visual feature.

THE LIVING ROOM

The most important space to get right when it comes to lighting is arguably the living room because that's where you want to relax and unwind after a long, hard day. It's worth considering the colour of the ambient light, making sure you minimise blue tones and opt for warm hues to encourage a welcoming atmosphere. With the resurgence of architectural lighting as decorative objects, a striking ceiling pendant is a great way to provide ambient lighting while creating a focal point bringing a touch of glamour and

ROSELIND WILSON

sophistication to the room.

In our Richmond project, the open plan living area is a hardworking space combining a kitchen, informal TV area and dining area. In order to ensure optimal ambient lighting across the whole space, we specified a series of downlights across the room to provide a good distribution of light.

In the library of our Antrim Grove project, the incredible floor-to-ceiling shelving is made even more dramatic with carefully positioned accent lighting highlighting the family's books, albums and games. With limited natural light, this cosy basement space is incredibly inviting because of the rich textures we introduced, such as the suede wall hangings, leather details and natural, hand-woven rug.

THE BEDROOM

Lighting is crucial in bedroom

design because a carefully chosen layered lighting scheme can really set the atmosphere of the room.

Why not think about introducing smart, ambient lighting which can be fine-tuned from day to night or according to mood? LEDs are perfect for sleeping areas because they are easily dimmable, can change colour and are energy efficient as well as long lasting.

For our Fitzrovia project, layers of light were a key consideration when it came to designing the bedroom. The client wanted his apartment to be an intimate pied-à-terre in which he could escape from the world and unwind. In response to this, we gave the master bedroom monochrome and smoky tones, giving a sense of warm tranquillity. We teamed practical LED downlights with perimeter LED lighting strips hidden behind the edge of the bulkhead to create a gentle, ambient light.

We then added bespoke brass bedside lights with red horsehair lampshades to provide warm accent lighting, which forms a link with the rich textures of the bespoke headboard.

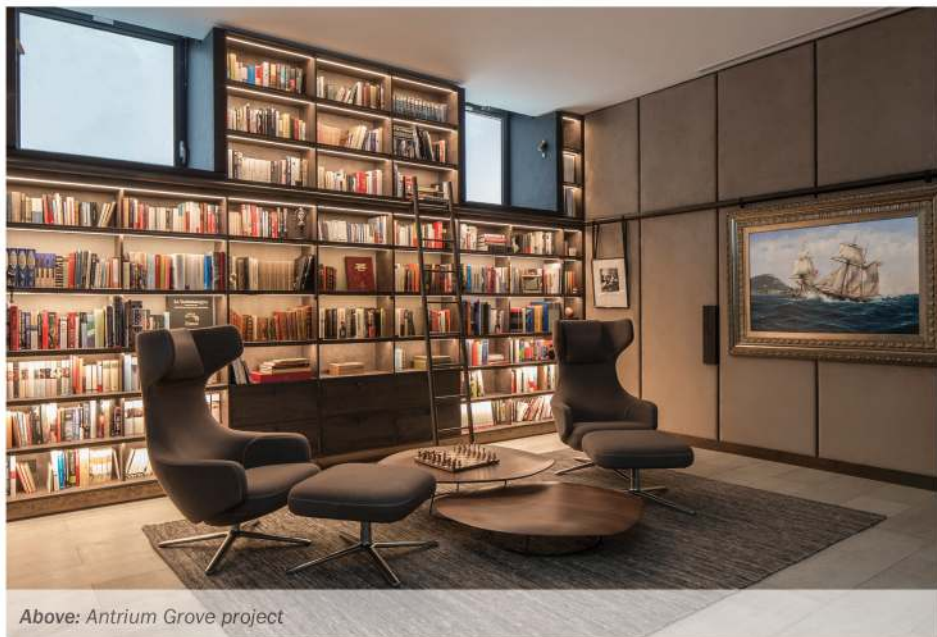
THE BATHROOM

Layers of light are key to creating a successful bathroom lighting scheme. You could start with a beautiful pendant or chandelier to create a glamorous focal point and then add layers of light such as downlights and mirror lights.

It's also worth thinking about using several different circuits of lights so that the mood can be adjusted as desired.

Make sure you're mindful of reflections in mirrors or in polished floors when it comes to bathroom lighting, as well as the colour temperature of the light.

It's especially important to ensure you install flattering lighting around the mirror. Because we all know that nothing lifts the



Above: Antrim Grove project



Above: Bromptons bathroom project

spirits like looking your best in the morning!

In our luxurious Bromptons bathroom, the pitched glass roof fills the room with natural light, so the design scheme for this room had to be very carefully thought out. We decided on a soft palette of greens, golds and whites to create a calm, spa-like feel. Task lighting for the basin area comes in the form of a polished gold Faro wall light from Bella Figura. The gold finish complements the tones of the marble and gives a sense of warmth.

One of the challenges presented by this space was the unusual alcove at the end of the room. The solution was to place a daybed there to enhance the spa-like feel. Then we installed multi-changing, coloured fibre-optics in the ceiling to

create a relaxed vibe and to add an extra dimension to the room.

THE HALLWAY

It's important for lighting in a hallway to be flexible so that it can serve both a practical function and a mood-enhancing one for when welcoming guests. The hallway tends to be used for practical purposes so make sure you keep it clutter-free and allow enough space to move around with ease. Why not consider task lighting to highlight a beautiful console table using striking wall lights or a pair of bold table lamps?

Over at our Broad Walk project in North London, the owners of this impressive, new build wanted to create a grand, elegant interior, which would still feel warm and welcoming. For the entrance hall, we chose a striking

brushed silver Smania chandelier to wash light across the circular table and the dramatic, monochrome floor tiles beneath. We then added antique brass wall lights from Porta Romana as accent lighting to highlight the textured silk wallpaper and add a sense of warmth and sophistication.

www.roselindwilsondesign.com
IG: @roswilsondesign